

Creo Launch GUI

(Graphical User Interface)

Prototype



Project Specs



Time: 3 months



Team

Mildrey Hervert - UX/UI Design Lead

Ceara Martinez - Subject Matter Expert

Chinh Nguyen - Subject Matter Expert

Alicia Soriano - UX/UI Design Assistant



Client: Solar CAD Team

My Responsibilities

UX Researcher

UI Designer

Facilitator

EMPATHIZE

Empathize Phase - User Interviews

During empathize phase, UX Designers conducted research by interviewing Creo Subject Matter Experts to better understand the current GUI and to get a better idea of their needs

We also interviewed 3 Creo users to find out what the problem was, and find a way to solve their problem

The Problem

Creo users are having trouble and feel confused when using the Creo Launch GUI (Graphical User Interface)

The Solution

Identify the issues with the Creo Launch GUI and work with users to improve the user experience by redesigning the GUI

Empathize Phase - Interviews

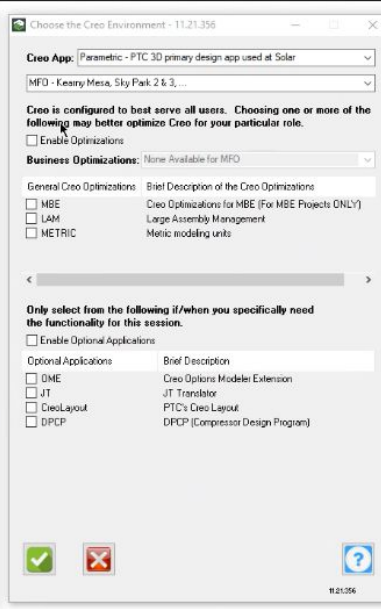
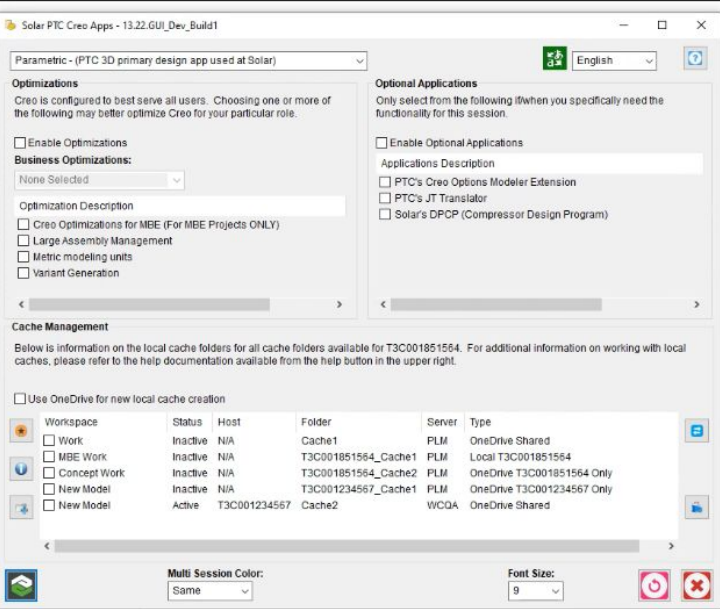
Interviewing Subject Matter Experts

- What is the name of the project?
- Who are our users?
- Are users designers? Engineers?
- How many screens are we expecting to have?
- Which technology are developers using?
- What does the business need?

Interviewing Creo Users

- How long have you been working at the company?
- How long have you been using the Creo Laung GUI?
- How often do you use the Creo Launch GUI?
- Could you walk me through your process when using the GUI?
- How long does it take you to open Creo?
- How many clicks do you make when using the GUI?
- What problems are you experiencing?
- What do you like the most about the current design?
- What do you dislike the most about the current design?

Original Design



After talking to Subject Matter Experts and Creo users about the original design we found out that...

- There is overall confusion with the current design
- The current flow does not make sense
- Content hierarchy is needed
- There is unnecessary information
- Some buttons are confusing
- The current design is oldschool

After identifying problems and finding solutions, we came up with...

Prototype 1

Creo Launch Graphical User Interface (GUI)

Session Background Color: Same Language: English GUI Font Size: Medium

Optimizations

Enable Optimizations

Business Optimizations: Default

General Creo Optimizations	Description
<input type="checkbox"/> MBE	Creo Optimizations for MBE Projects Only
<input type="checkbox"/> LAM	Large Assembly Management
<input type="checkbox"/> METRIC	Metric Modeling Units
<input type="checkbox"/> OME	Variant Generation

Optional Applications

Enable Optional Applications

Optional Applications	Description
<input type="checkbox"/> OME	PTC's Creo Options Modeler Extension
<input type="checkbox"/> JT	PTC's JT Translator
<input type="checkbox"/> Creo Layout	PTC's Creo Layout
<input type="checkbox"/> DPCP	Solaris DPCP (Compressor Design Program)

Cache Management

Workspace	Status	Server	Host	Folder	Type
<input checked="" type="radio"/> Work (Default)	Inactive	PLM	N/A	Cache1	OneDrive Shared
<input type="radio"/> MBE Work	Inactive	PLM	N/A	T3C001851564_Cache1	Local T3C001851564
<input type="radio"/> Concept Work	Inactive	PLM	N/A	T3C001851564_Cache2	OneDrive T3C001851564 Only

Work (Default) Local Cache Description:
This workspace will be used for special projects

Following are the workspaces activated in "Work (Default)" local cache:
CP
Temporary Workspace
test ws 3

Run Creo Cancel

Prototype 2

Creo Launch Graphical User Interface (GUI)

Session Background Color: Default Preferences Help

Basic **Advanced**

Work Type

- Variant Generation
- Manufacturing
- Package Design Work
- Engine Design Work
- Designing for Additive Manufacturing
- Analysis Using NX
- Gas Compressor Design Work

Cache Management

Workspace	Status	Server	Host	Folder	Type
<input type="radio"/> Work (Default)	Inactive	PLM	N/A	Cache1	OneDrive Shared
<input checked="" type="radio"/> MBE Work	Inactive	PLM	N/A	T3C001851564_Cache1	Local T3C001851564
<input type="radio"/> Concept Work	Inactive	PLM	N/A	T3C001851564_Cache2	OneDrive T3C001851564 Only

Run Cancel

TEST

Who did we talk to?

5 Testers

- Tester 1 (Creo user with 3 months of experience)
- Tester 2 (Creo user with 7 years of experience)
- Tester 3 (Creo user with 15 years of experience)
- Tester 4 (Creo user with 15 years of experience)
- Tester 5 (Creo user with 19 years of experience)



What were we looking for during testing?

1. Users' Current Process
2. Major Pain Points
3. Ways to Improve the prototypes
4. Feedback

Usability Testing Results - A/B Testing

During A/B Testing we tested 2 different prototypes:

Prototype 1

Creo Launch Graphical User Interface (GUI)

Session Background Color: Same Language: English GUI Font Size: Medium

Optimizations

Enable Optimizations

Business Optimizations: Default

General Creo Optimizations Description

Optimization	Description
<input type="checkbox"/> MBE	Creo Optimizations for MBE Projects Only
<input type="checkbox"/> LAM	Large Assembly Management
<input type="checkbox"/> METRIC	Metric Modeling Units
<input type="checkbox"/> OME	Variant Generation

Optional Applications

Enable Optional Applications

Optional Applications	Description
<input type="checkbox"/> OME	PTC's Creo Options Modeler Extension
<input type="checkbox"/> JT	PTC's JT Translator
<input type="checkbox"/> Creo Layout	PTC's Creo Layout
<input type="checkbox"/> DPCP	Solar's DPCP (Compressor Design Program)

Cache Management

Workspace	Status	Server	Host	Folder	Type
<input checked="" type="radio"/> Work (Default)	Inactive	PLM	N/A	Cache1	OneDrive Shared
<input type="radio"/> MBE Work	Inactive	PLM	N/A	T3C001851564_Cache1	Local T3C001851564
<input type="radio"/> Concept Work	Inactive	PLM	N/A	T3C001851564_Cache2	OneDrive T3C001851564 Only

Work (Default) Local Cache Description:

This workspace will be used for special projects

Following are the workspaces activated in "Work (Default)" local cache:
CP
Temporary Workspace
test ws 3

Run Creo Cancel

Prototype 2

Creo Launch Graphical User Interface (GUI)

Session Background Color: Default Preferences

Basic **Advanced**

Work Type

- Variant Generation
- Manufacturing
- Package Design Work
- Engine Design Work
- Designing for Additive Manufacturing
- Analysis Using NX
- Gas Compressor Design Work

Cache Management

Workspace	Status	Server	Host	Folder	Type
<input type="radio"/> Work (Default)	Inactive	PLM	N/A	Cache1	OneDrive Shared
<input checked="" type="radio"/> MBE Work	Inactive	PLM	N/A	T3C001851564_Cache1	Local T3C001851564
<input type="radio"/> Concept Work	Inactive	PLM	N/A	T3C001851564_Cache2	OneDrive T3C001851564 Only

Run Cancel

Usability Testing Results - A/B Testing

After conducting A/B Testing, we compiled the comments, answers and reactions from our 5 testers using the Research Synthesis template below (affinity map replacement). By doing this, we were able to gather the most repetitive comments and concerns provided by testers, therefore, we were able to come up with solutions to improve the design.

Creo Launch GUI - Synthesis												
Priority	Method	Category/Topic/Page	Subcategory	Group/Role	User	Concept 1 or 2	Question	Notes/Answer	Solution	Status	Present	Journey map?
		Background		Design Engineer	AHA	Concept 1	How long have you been using Creo at Solar?	3 Months				No Action Needed
				Principal Design	MD	Concept 1	How long have you been using Creo at Solar?	15 Years				No Action Needed
				Principal Design	RO	Concept 1	How long have you been using Creo at Solar?	15 Years				No Action Needed
				TMP Principal Er	TR	Concept 1	How long have you been using Creo at Solar?	19 Years				No Action Needed
				Principal Design	CM	Concept 1	How long have you been using Creo at Solar?	7 Years				No Action Needed
		Usability Test		Design Engineer	AHA	Concept 1	How often do you require advance optimizations for your Creo session? (How many times a week/month/year?)	1 / Month				No Action Needed
				Principal Design Er	MD	Concept 1	How often do you require advance optimizations for your Creo session? (How many times a week/month/year?)	Just at the beginning when starting a new Creo, I don't do it very often...				No Action Needed
				Principal Design	RO	Concept 1	How often do you require advance optimizations for your Creo session? (How many times a week/month/year?)					No Action Needed
				TMP Principal Eng.	TR	Concept 1	How often do you require advance optimizations for your Creo session? (How many times a week/month/year?)	Once or Twice every month				No Action Needed
				Principal Design Er	CM	Concept 1	How often do you require advance optimizations for your Creo session? (How many times a week/month/year?)					No Action Needed

Usability Testing Results

After compiling our notes and findings using the Research Synthesis Excel document, we decided to either keep or remove the following features:

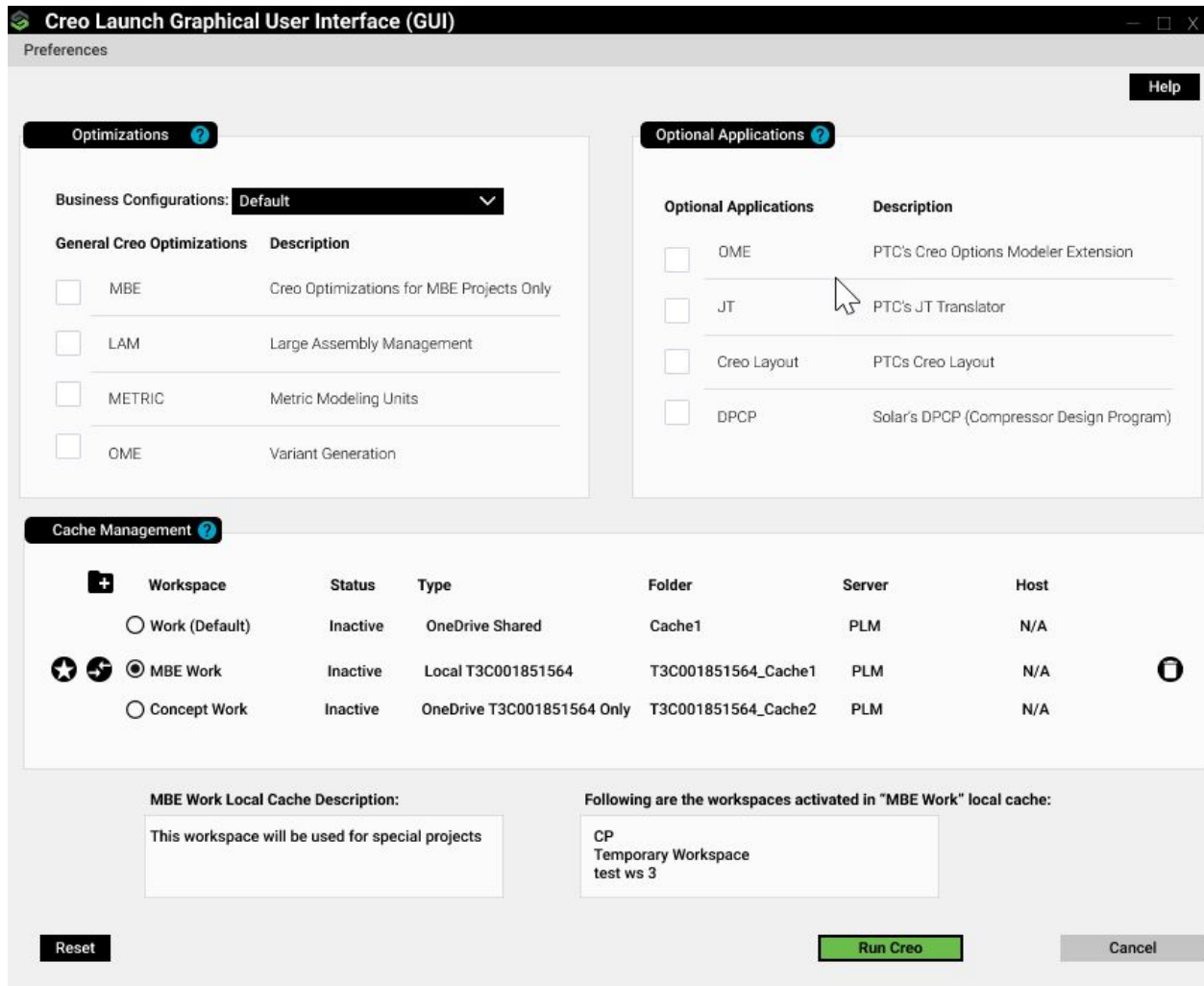
- Timed Screen (kept time at 10 seconds)
- User Flow from prototype 1
- Kept the “GUI Font Size” and “Language” under the “Preference” menu
- Kept the “Help” button at the top right corner
- Kept visible markings for section tooltips in the “Optimizations, Optional Applications and Cache Management” sections
- By clicking the “Business Configurations dropdown” users will be able to select the “Business Optimizations” they need
- We kept the “Folder” button and “Default Cache selection”
- We kept a “Delete” button, users will be able to delete a cache folder by clicking the delete button
- Kept floating icons in the Cache Management table
- We kept the Cache Description below the “Cache Management Table”
- We kept the “Reset” button on the bottom left corner
- We decided to keep main window buttons with words instead of image buttons
- Users will be able to “Run Creo” by clicking the green button

Final Mockup

After deciding which features to keep, remove or change we came up with the final design

The link below will take you to the final design in Figma:

[Creo Launch Graphical User Interface \(GUI\) - Prototype](#)



Next Steps...

During Usability testing we took some other important notes we didn't include in the final prototype, therefore, we sent the notes to the CAD team, so they could decide to implement the notes in the final design or not

Thank You!